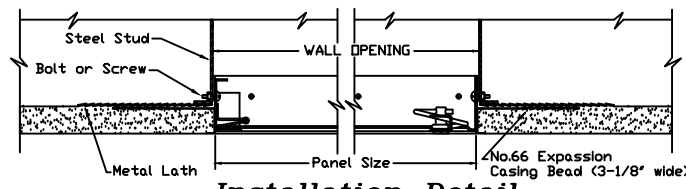
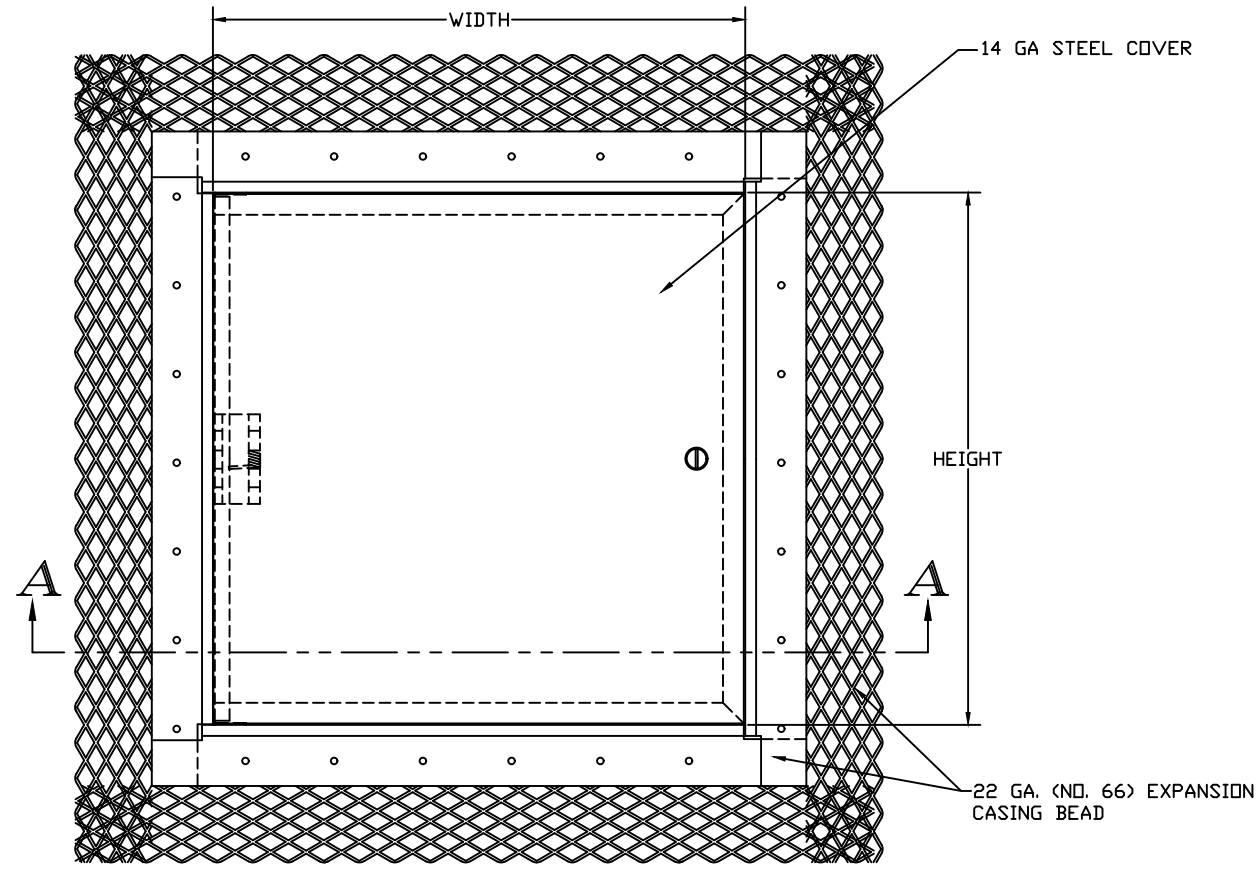


NOTE: FINISH: ONE COAT BAKED ON ENAMEL
POWDER COATED FINISH

* CAM LOCK (CENTERED) AT TOP AND BOTTOM OF PANEL;
BALANCE OF CAM LOCKS ON SIDE OPPOSITE HINGES

STANDARD SIZES and PRODUCT NUMBERS

DOOR SIZE	WALL OPENING	PRODUCT NO. STYLE K	No. OF CAMS	No. OF HINGES
8 x 8	8 1/4 x 8 1/4	3200010	1	1
8 X 12	8 1/4 x 12 1/4	3200012	1	1
12 x 12	12 1/4 x 12 1/4	3200014	1	1
12 x 16	12 1/4 x 16 1/4	3200016	1	2
12 x 18	12 1/4 x 18 1/4	3200018	1	2
12 x 24	12 1/4 x 24 1/4	3200019	2	2
16 x 16	16 1/4 x 16 1/4	3200020	1	2
16 x 20	16 1/4 x 20 1/4	3200022	1	2
18 x 18	18 1/4 x 18 1/4	3200024	1	2
20 x 24	20 1/4 x 24 1/4	3200026	4 *	2
20 X 30	20 1/4 x 30 1/4	3200028	5 *	3
24 x 24	24 1/4 x 24 1/4	3200030	4 *	2
24 x 30	24 1/4 x 30 1/4	3200032	5 *	3
24 x 36	24 1/4 x 36 1/4	3200034	5 *	3
30 x 30	30 1/4 x 30 1/4	3200035	5 *	4
36 x 36	36 1/4 x 36 1/4	3200036	5 *	5



Installation Detail

THIS DRAWING IS THE PROPERTY OF COMMERCIAL PRODUCTS GROUP AND CONTAINS PROPRIETARY INFORMATION. NOT TO BE REPRODUCED OR REDISTRIBUTED WITHOUT CPG'S WRITTEN PRIOR CONSENT.

MILCOR

28 W. Adams, Suite 1810 Detroit, MI 48226

PH.: 800-624-8642 FAX: 855-549-2674 www.milcorinc.com

K ACCESS DOOR

STANDARD FLUSH DOOR for DRYWALL, MASONRY or TILE WALLS

MATERIAL SCHEDULE

PART NO.	SIZE	COVER	FRAME
SUBMITTAL	W" x H"	14 GA.	16 GA.

DATE	02/10/2023	DRAWN	CD
REV		JOB NO.	
		SHEET 1 of 1	

