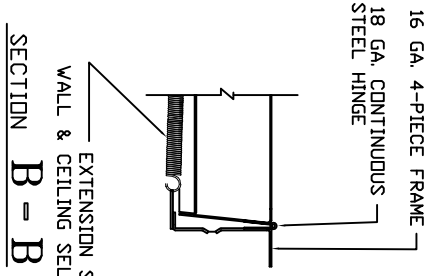
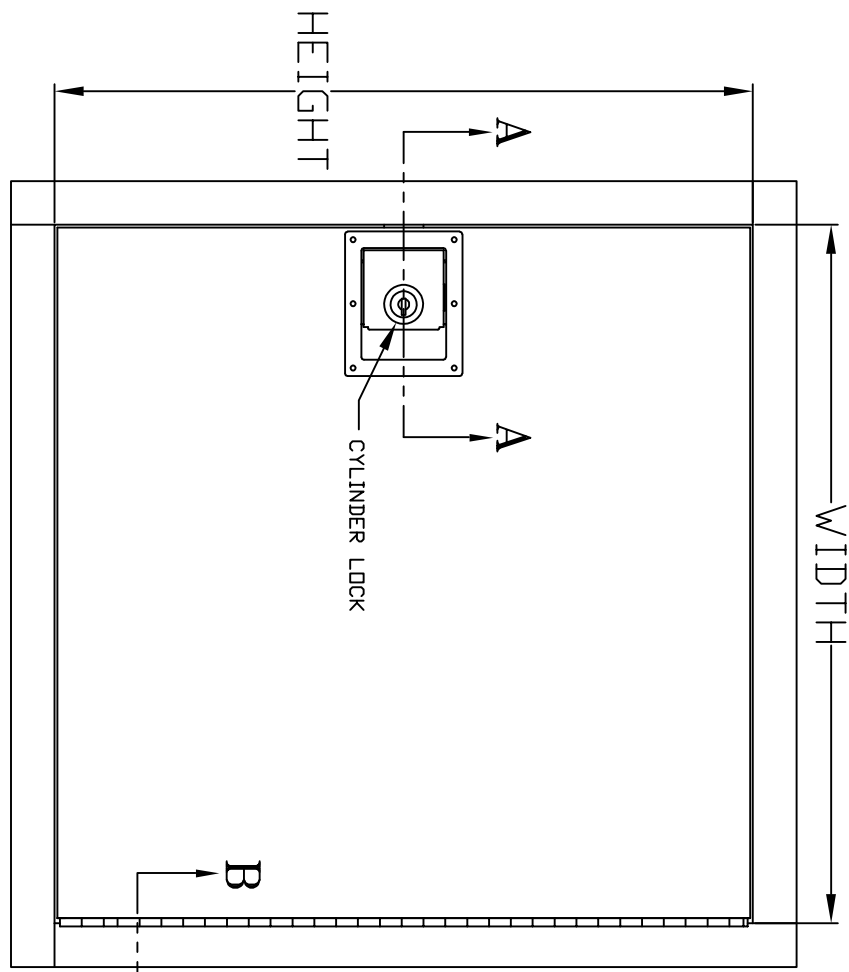


STANDARD SIZES & PART #'S			
DOOR SIZE (W X H)	No. OF LATCHES	PRODUCT PART #'S	PAINTED STEEL
8 X 8	1	3219008	
12 X 12	1	3219012	
14 X 14	1	3219014	
16 X 16	1	3219016	
18 X 18	1	3219018	
22 X 30	1	3219023	
22 X 36	1	3219027	
24 X 24	1	3219024	



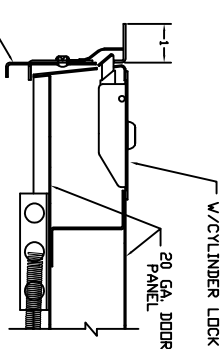
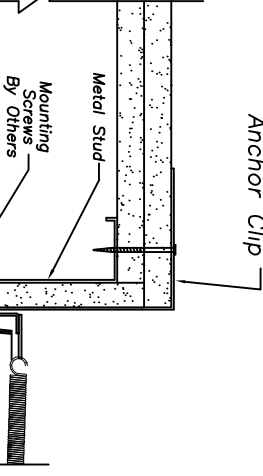
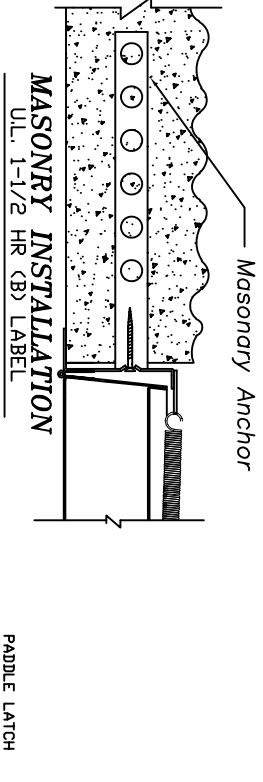
SECTION B - B

**STANDARD DOOR FEATURES AND NOTES**

- 16 GA. CRS. FRAME
- 20 GA. CRS. NON-INSULATED DOOR PANEL
- CARRIES BOTH UL AND CUL 1-1/2 HOUR, CLASS B FIRE RATING
- WHITE POWDER COATED STEEL
- ROUGH REQ. MASONRY WALL OPENING = WIDTH + 3/8" X HEIGHT + 3/8"
- WALL APPLICATION ONLY
- TWO PADDLE LATCHES USED WHEN SIZE > 36" X 36"

- SPECIAL OPTION LIMITATIONS**
- 8' <= WIDTH <= 48'
  - 8' <= LENGTH <= 48'
  - STAINLESS STEEL NOT AVAILABLE WHEN SIZE >= 36" X 36"
  - STAINLESS STEEL NOT AVAILABLE WITH MORTISE LOCK OPTIONS
  - MORTISE LOCK OPTIONS NOT AVAILABLE WHEN SIZE = 8' X 8'
- SPECIAL OPTIONS**
- FINISH \_\_\_\_\_
- LATCH/LOCK ANCHORS: \_\_\_\_\_
- NOTES: \_\_\_\_\_

\$25 SPECIAL SET UP FEE UPON ORDER



**STUD WALL INSTALLATION**

QUANTITY:	SELECT STD. DR SPEC.
JOB NAME:	
REP NAME:	
STANDARD ACCESS DOOR PART #:	
SPECIAL ACCESS DOOR (FILL OUT SPECIAL OPTIONS)	

ORDER WILL NOT BE RELEASED FOR FABRICATION UNTIL SIGNED COPY IS RECEIVED AND APPROVAL OF GENERAL ARRANGEMENT AND DETAILED DIMENSIONS OF THIS JUDGMENT ARE REQUIRED BEFORE THE ORDER IS ENTERED FOR MANUFACTURING.

APPROVAL SIGNATURE: \_\_\_\_\_

TITLE HELD: \_\_\_\_\_

DATE OF APPROVAL: \_\_\_\_\_

THIS DRAWING IS THE PROPERTY OF MILCOR AND CONTAINS PROPRIETARY INFORMATION. NOT TO BE REPRODUCED OR REDISTRIBUTED WITHOUT MILCOR'S WRITTEN PRIOR CONSENT.

**MILCOR**

5030 Corporate Exchange Blvd. SE, Grand Rapids, MI 49512  
 PH.: 800-624-8642 FAX: 855-549-2674 www.milcorinc.com

**NON-INSULATED FIRE RATED DOOR FOR WALLS**

**NFR ACCESS DOOR**